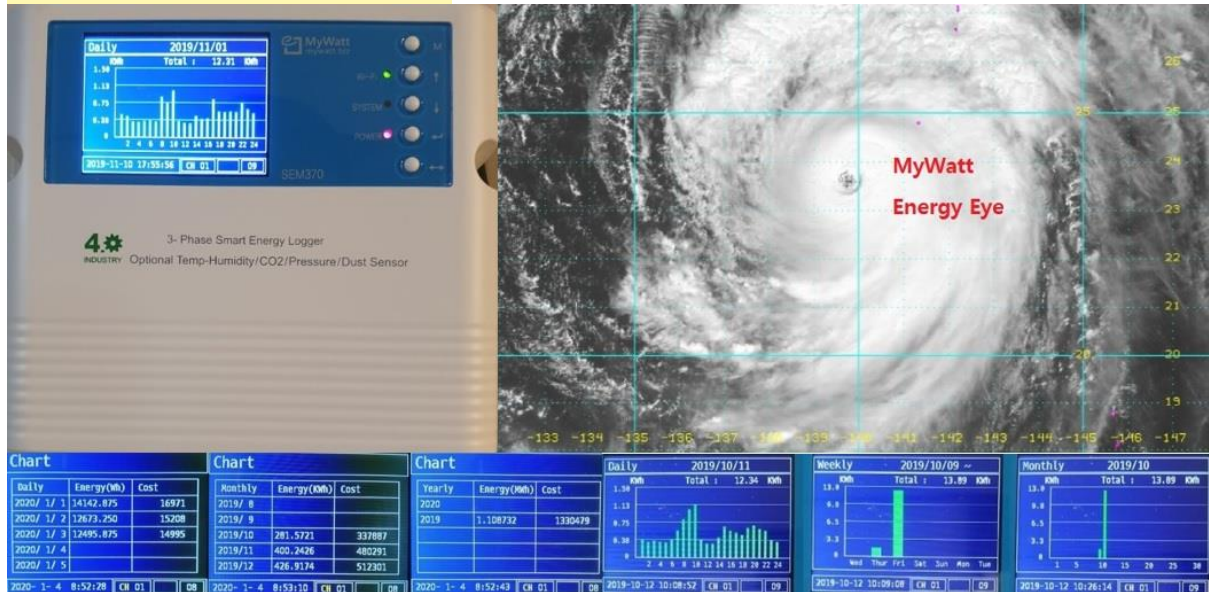


SEM375 Smart Energy Logger

MYWATT SEM375 Wall Mounting Type 3-Phase Electricity Energy Logger (2.4" TFT LCD)

Size: 1200MM X 1100MM



Scope of Supply

1. SEM375 ENERGY-EYE Smart Electricity Energy Logger: 1set

*3-Phase 4-Line Electricity, V, A, Power Factor, Frequency (Hz), Active Power, Reactive Power Apparent Power, Total Power

*2.4" Icd Display Unit: Day/Week/Month/Year bar graph display, Day/Month/Year Chart display, 2-years data logging on Flash memory.

***Communication: RS-485 MODBUS, TCP/IP (LAN), Free RS-485 software.**

***Accuracy: 1%**

2. 5-Years Web Cloud Service Free (LAN or WIFI):

Day/Week/Month/Year Graphic display with 1-Minute interval, 30-Channel monthly energy consumption display, Day/Month graph compare display, Day/Month database download function.

**3. 4-Gb Micro-sd Card (10-Year data logging with 1-Minute interval):
1pc**

4. Clip-on Type 100A Current Clamp: 3pcs

**5. 2-Wire 230V power cable for single phase measurement (2 meter):
1pc**

6. 9-Sets Lcd scroll mode (5-Second interval): Realtime/Total Power, Day/Month energy and cost display, Temperature/Humidity display, Day/Month Graph display, Day/Month Chart display and Compare display.

7. RS-485 to USB Adapter: 1PC (1pc for 1 project)

8. Temperature and Humidity sensor: Option

9. Air pressure sensor (10 bar): Option

10. Software for Micro SD Card database: Free for limited period.

11. SD Card firmware upgrade up to 5-Years: You can upgrade the firmware only by sd-card.

12. 1-Year energy data report: By using specially made software through RS-485 line.

13. 32-Channel Graphic Software: Free for limited period only for 10 sets buyer.

14. Alarm mode: High/Low setting

15. Compare mode: Yesterday/Today and Last month/this month.

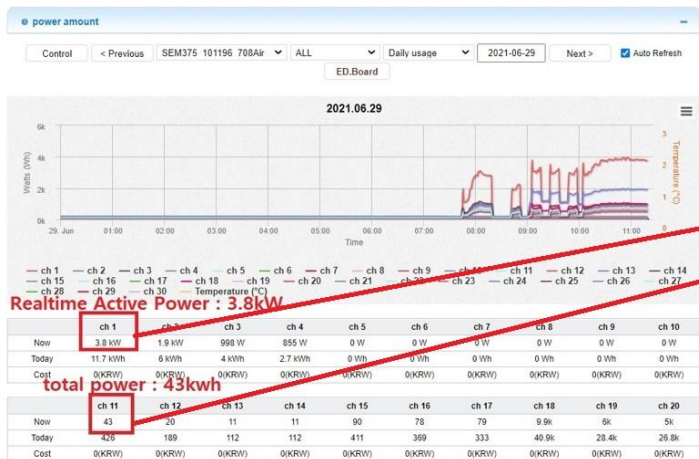
Korins Inc.

Rm. 708, Dunchon-daero 474, Gyeonggi Province, Korea.
Postcode: 13229

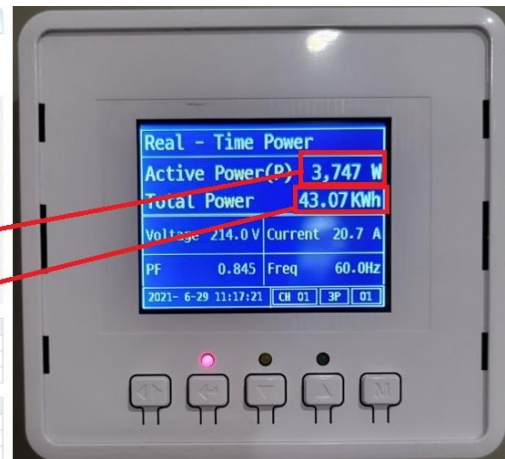
Tel: +82-31-777-1588, +82-10-8905-1244

www.mywatt.biz www.energyeye.kr hyh@korins.kr

<https://www.youtube.com/watch?v=IN-vfCj75eA>



WEB CLOUD SERVICE



SEM380 SMART ENERGY
LOGGER